



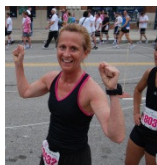
20th
ANNUAL

Susan G. Komen Detroit Race for the Cure® Promise Club Dinner August 9, 2011 ~ 1917 American Bistro

Our promise is to save lives and end breast cancer forever by empowering people, ensuring quality care for all and energizing science to find the cures.

2011 KOMEN DETROIT PROMISE CLUB MEMBERS

Yashwant Amin raised **\$5,600** this year. A Farmington Hills resident, this is his first year of participation. We welcome him to the Platinum Club and the Promise Club.



Karen Balousek raised **\$5,000** this year and, since 2004, has raised \$60,185. Karen is a 7-year Platinum Club member. She was the top overall individual fundraiser in 2006 and 2007 and placed 2nd in 2008.

Stephanie Bourdon raised **\$12,600** this year and, since 2010, has raised \$14,805. Stephanie is a 2-year Platinum Club member and a 2 1/2 year breast cancer survivor. Stephanie is a member of the team Steph's Stompers.



Hope Bradford raised **\$10,360.18** this year and, since 2009, has raised \$19,539. Hope is a 2-year Platinum Club member and a 2-year breast cancer survivor. She is the captain of the Kelly Services team and a member of the Komen Detroit Planning Committee. This is the second year that Hope has led enthusiastic and successful fundraising efforts at Kelly Services, Inc.

Julie Campbell raised **\$5,070** this year and, since 2007, raised \$19,787. Julie is a 4-year Platinum Club member. She is a member of Julie's Angels team, who race in memory of the late Julie Sim.



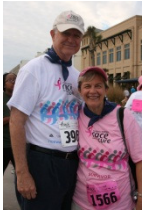
Ann Chapaton raised **\$5,055** this year and, since 2006, raised \$15,603. Ann is a 3-year Platinum Club member. She is a 6-year breast cancer survivor and captain of the Grand Ta Ta's team

Lynda Jablonski raised **\$5,608** this year. Lynda was the top overall fundraiser in 1997 and 2nd overall in 1998. She is an 8-year Platinum Club member, a member of the Stay and Play team and a 19-year breast cancer survivor. Since 1997, Lynda raised more than \$50,000.

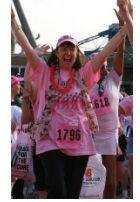


Robert Mitchel raised **\$5,004** this year-- his first year of involvement with Friends for the Cure®. Bob's wife Michele passed away from vulvar cancer on March 12, 2010. He has devoted himself to raising funds for breast cancer in her name. He is the captain of Michele's Dream Team.

Monique Mathieson raised **\$5,000** this year. A 2-year Platinum Club member, she is on the Morgan Stanley Smith Barney team-- our top fundraising team for 2009, 2010 and 2011.



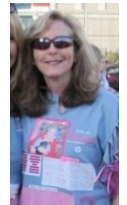
Barb Roller raised **\$12,925** this year. Barb is an 11-year breast cancer survivor who has raised more than \$61,600. A 6-year Platinum Club member, she is captain of Barb's Battalion. Barb was the 3rd overall fundraiser in 2009 and has been a top ten fundraiser for the past 5 years.



Mary Phyl Sieger raised **\$5,340** this year and, since 2004, has raised \$29,420. Mary Phyl is a 7-year Platinum Club member. She is an 11-year breast cancer survivor.



Audrey Sim, MD, raised **\$15,010** this year and is a 7-time Platinum Club member who has raised over \$46,000 in the past 4 years. Dr. Sim is the 2nd overall fundraiser for 2011 and was 3rd overall in 2010. She is the captain of Julie's Angels in memory of her sister Julie, who died in 2005. Dr. Sim has also walked in Komen's 3-Day and has volunteered for Komen Detroit for several years.



Nancy Stesney raised **\$5,325** this year and, since 2005, has raised \$41,827. A Platinum Club member and top-ten fundraiser for the past 7 years, Nancy is on the HP team, which placed 2nd overall in 2010 and 3rd overall in 2011.



Carole Sulad (Nov. 11, 1930 to May 26, 2011) raised **\$5,081** this year and since 2005, has raised \$20,381. "MamaSu" was a 5 year Platinum Club member. She fought breast cancer for 10 years. Her daughter Cindy, also a 10-year survivor, is representing Carole at tonight's Promise Club Dinner. Cindy has raised more than \$20,000 since 2004. Mother and daughter together have raised more than \$41,000 for the Komen Detroit Race for the Cure®. We will very fondly remember, and always miss our "MamaSu."



Jodi Whitmore raised **\$14,995** this year and is a 5-time Platinum Club member who has raised more than \$67,000 over the past 5 years. She is our 3rd overall fundraiser for 2011 and placed 2nd in 2009 and 2010. Jodi is the captain of the Morgan Stanley Smith Barney team and is instrumental in her team raising more than \$126,000 since 2009. Jodi dedicates her efforts in memory of her daughter-in-law Tamika who died in 2008 and with the hope that granddaughter Tea will see a world without breast cancer.



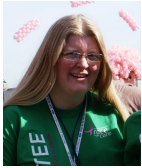
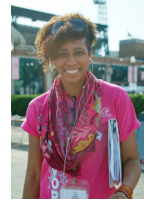
Dorene Williams raised **\$21,070** this year and has raised more than \$81,000 in the past 4 years. Dorene is a 4-year Platinum Club member. She was the top overall individual fundraiser in 2008, 2009, 2010, and is again in 2011. She is the captain of Daro's Bosom Buddies team. She the proud mother of sons Lucas and Cody and a 10-year breast cancer survivor living courageously with metastatic disease.

KOMEN DETROIT STAFF



Mo Keenan Meldrum is director of Breast Cancer Special Programs at Karmanos Cancer Institute, local presenting sponsor of the Susan G. Komen Detroit Race for the Cure, which she has chaired for 10 years. In that time, \$16.3 million total revenue has been generated. Mo is a 20-year survivor.

Katrina Studvent, LLMSW, has been the manager of Breast Cancer Special Programs at the Karmanos Cancer Institute and Race Co-chair since October 2010. A past member of the Komen Detroit Planning Committee, Katrina is a 5-year breast cancer survivor and a graduate of Michigan State University James Madison College (BA) and The University of Michigan School of Social Work.



Maggie Walsh, MSW, is coordinator Breast Cancer Special Programs at Karmanos Cancer Institute. She assists in all aspects of planning, implementation and pre-and post-event work related to Susan G. Komen Detroit Race for the Cure®, as well as the Heroes of Breast Cancer program. 2011 was Maggie's second Race.

Lisa Braddix, MPH, is Komen Detroit's breast program specialist. Lisa coordinates the biennial community assessment and oversees Komen Detroit's community grant making, educational activities and public policy / advocacy initiatives. Lisa is a graduate of Ohio State University (BA), University of Michigan (MPH) and has done post-graduate work at Eastern Michigan University. She dedicates her work to the memory of her mother, who died from breast cancer in 2009. This year was Lisa's first Race.



KOMEN DETROIT FRIENDS FOR THE CURE® PROGRAM LEADERS



Michael Meldrum has been Friends for the Cure® chair since program inception in 1997. He has helped create every aspect of the Friends program and has guided its evolution. The program has raised more than \$8.5 million since 1997 and now represents over 45% of annual total Race revenue. Michael is a full-time volunteer at the Komen Detroit office who also oversees the extensive logistics leading up to the Race. He is a 20-year co-survivor.

Shari Franko has served as Friends for the Cure® co-chair of events since 2010. A member of the Komen Detroit Planning Committee along with her husband Jeff Lucyk, Shari and Jeff contribute time and talent in numerous ways. Shari's primary role is planning the September Celebration, Platinum Club Dinner and, this year, tonight's inaugural Promise Club Dinner. She has been fundraising since 1997 and has raised an amazing \$135,516 since 1997. She was the top overall fundraiser in 1998, 1999, 2000 and 2001. Shari is a 15-year survivor.



Amelia Zubeck has served as Friends for the Cure® data co-chair since 2010. Amelia's volunteer responsibilities include planning, data management and quality control for the Friends program. She has been participating in the Komen Detroit Race for the Cure since 2002 at the age of 13. She is a student at Central Michigan University and part-time administrative assistant at the Komen Detroit office.

GUEST EXPERTS



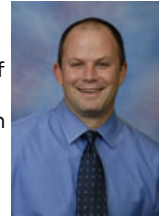
Gerold Bepler, MD, PhD has been president and CEO of the Barbara Ann Karmanos Cancer Institute since February 2010. Dr. Bepler also serves as the Wayne State University School of Medicine Associate Dean of Cancer Programs. A thoracic oncologist, Dr. Bepler has received several awards and recognitions, including the Moffitt Cancer Center's Scientist of the Year (2008), American College of Physicians Information and Education Resource Editorial Consultant (2007-2008) and served on the Journal of Clinical Oncology Editorial Board (2006-2008). He holds seven patents.

Neb Duric, PhD, is Imaging Program Leader at Karmanos Cancer Institute and professor in the Radiation Oncology Department at Wayne State University. A Komen grantee, his research uses ultrasound tomography to detect and characterize tumors and assess cancer risk. Dr. Duric and Dr. Peter Littrup are co-creators of SoftVue, a breast cancer screening device that uses ultrasound tomography to image acoustic properties of breast tissue. Unlike mammography, this does not involve radiation or compression, takes about one-minute and is very effective in imaging women with dense breasts who have an unusually high breast cancer risk. Dr. Duric received the Karmanos Cancer Institute Heroes of Breast Cancer Award for Scientific Distinction in 2007. He is the co-captain of Karmanos Cancer Institute's Komen Detroit Race team—among the 2011 ten largest teams with 364 members.





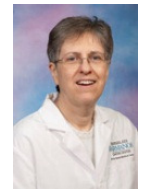
David Gorski, MD, PhD, FACS is a surgical oncologist at Karmanos Cancer Institute and Breast Cancer Multidisciplinary Team leader, co-leader of the Breast Cancer Biology Program, co-director of the Walt Comprehensive Breast Center, and chief of Breast Surgery. He is associate professor of Surgery at Wayne State University. An investigator whose primary research interests include tumor angiogenesis and the role of glutamate receptors' role in breast cancer growth and metastasis, Dr. Gorski takes an active interest in the problems of breast cancer over-diagnosis and overtreatment. He drew media attention as a volunteer "Myth Bustier" at the 2011 Race.



Nick Karmanos is Senior Vice President, Institutional Relations, at Karmanos Cancer Institute, named in memory of his mother Barbara Ann Karmanos, who died at 46 after a courageous 8-year battle with breast cancer. Nick addressed the 2002 Race crowd with these words: "It is a testament to the courage of women, success of modern science and the tireless efforts of the community that we have so many breast cancer survivors here today. It's encouraging to see so many lives saved and so many families preserved." Nick has been with the Institute since 2000 and is "passionately committed promoting the Institute to the public and to those who are in need of top-level cancer care." Breast Cancer Special Programs reports to Nick.



Karin List, PhD, is an assistant professor, Department of Pharmacology, Karmanos Cancer Institute and WSU School of Medicine. Komen funded Dr. List to lead the first ever study investigating the role of matriptase in breast cancer progression. This is a newly discovered enzyme of the protease class located on the surface of the cells that form the ducts of the mammary gland. Elevated levels of proteases help tumors invade tissue and spread to distant sites, and matriptase is found in higher levels in most women with breast cancer which can predict a more aggressive tumor that is more difficult to treat. List and her team study consequences of eliminating matriptase for breast cancer within the mammary glands of mice and in cell culture to compare the ability of cancer cells that have matriptase with cells that lack matriptase to grow and spread tumors.

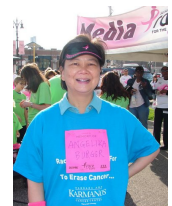


Patricia LoRusso, D.O. is director of the Phase I Clinical Trials Program at Karmanos Cancer Institute and professor of Hematology and Oncology at Wayne State University. She has won numerous awards including the 1999 Karmanos Cancer Institute Heroes of Breast Cancer. As Co-Primary Investigator on a Komen funded Promise Grant (with Drs. Max Wicha, University of Michigan and Jeffrey Trent, VanAndel Institute) grant, she and the team will study different racial/ethnic molecular profile to develop a strategy for targeted clinical therapies.

Lawrence Lum, M.D., D.Sc., is professor of oncology, medicine, immunology and microbiology, as well as scientific director of Bone Marrow Transplantation and Immunotherapy at Karmanos Cancer Institute and WSU. His Komen-funded research intends to boost patient immunity against their own breast cancer cells by treating with Her2Bi-armed ATC, collect a portion of these pre-immunized cells after treatment, expand the pre-immune cells in culture, and then infuse the expanded, pre-immunized cells back into the patient after stem cell transplant (SCT). The hypothesis is that the transfer of pre-immunized cells after PBSCT will accelerate the recovery of the patient's immune system as well as enhance the immune-mediated killing of residual tumor cells. A study was finished that shows that infusions of the pre-immune activated T cells after SCT lead to the development of anti-breast cancer immunity as early as 2 weeks after SCT that lasted up to 1.5 years after SCT.



Wei-Zen Wei, Ph.D., is associate center director of Basic Science at Karmanos Cancer Institute and professor in the department of Immunology and Microbiology. Since 1996, Dr. Wei and her research team have been working on a series of cancer-fighting vaccines to help prevent HER2-positive breast cancer, which accounts for 20 - 30% of breast cancers. She received the Karmanos Cancer Institute Heroes of Breast Cancer Award for Scientific Distinction in 2008. Dr. Wei has spoken at numerous Komen events including the September Celebration and the Komen Michigan 3-Day for the Cure.



Maria Worsham, Ph.D., FACMG, is a senior scientist and director of research in the Department of Otolaryngology/Head and Neck Surgery; an American College of Medical Genetics fellow; and professor, Department of Pathology Wayne State School of Medicine and Henry Ford Health System. Dr. Worsham has served as an advisor to Komen Detroit's grant-making process over several years. Her Komen research grant will shed light on ER-negative tumors (basal-like and HER2 positive), which make up approximately 30% of all breast cancer, and preferentially affect young and African American women. A better definition of poor prognosis breast cancers and their associated target genes will allow the development of new drugs that will in turn allow improved management of these cancers.