

To help people dealing with these life-threatening diseases, the Barbara Ann Karmanos Cancer Center and the Center for Occupational and Environmental Medicine created the **National Center for Vermiculite and Asbestos-Related Cancers**.

**The Center's goals are to:**

- Implement an aggressive early detection and treatment program.
- Define populations at increased risk.
- Increase the basic scientific understanding of asbestos-related diseases.
- Intensify physician education of asbestos-related diseases.
- Develop ways to quickly test people potentially affected by chronic asbestos exposure.

## THE TEAM APPROACH

Patients from across the country seek treatment at the National Center for Vermiculite and Asbestos-Related Cancers, which is co-directed by Dr. Michael Harbut and Dr. John Ruckdeschel. Patients benefit from state-of-the-art scanning equipment and a multidisciplinary, research-driven approach to early detection and treatment.



**MICHAEL R. HARBUT, M.D., M.P.H., F.C.C.P.**

Dr. Harbut is chief of the Center for Occupational and Environmental Medicine and faculty member of the Karmanos Cancer Center, and is an internationally known expert in the diagnosis and treatment of environmental and workplace diseases. He is co-author of the world's largest study of respiratory health in asbestos-exposed ironworkers and a study that announced the discovery of a blood test for early detection of mesothelioma. This study was printed in the New England Journal of Medicine. He is also co-author of the American Thoracic Society's most recent criteria for the diagnosis and treatment of asbestos-related non-malignant diseases.



**JOHN C. RUCKDESCHEL, M.D.**

Dr. Ruckdeschel is an internationally recognized clinical investigator in lung cancer and a cancer control researcher who maintains active research and clinical efforts in addition to his duties as President and Chief Executive Officer of the Karmanos Cancer Institute. He is also a practicing physician and member of the Karmanos Thoracic Cancer Multidisciplinary Team.



*Photos from left: Ann Schwartz, Ph.D., associate center director for Population Science at Karmanos; Manuel Valdivieso, M.D., chief medical officer and associate center director for Clinical Affairs at Karmanos, and professor of medicine at Wayne State University; Brad Black, M.D., medical director for the Center for Asbestos Related Disease; and Antoinette Wozniak, M.D., thoracic multidisciplinary team leader at Karmanos and professor of internal medicine at Wayne State University.*

**Hear cancer. Think Karmanos.**



4100 John R • Detroit, Michigan 48201  
**1-800-KARMANOS**  
[www.karmanos.org](http://www.karmanos.org)

# ASBESTOS, VERMICULITE *and Your Lungs*



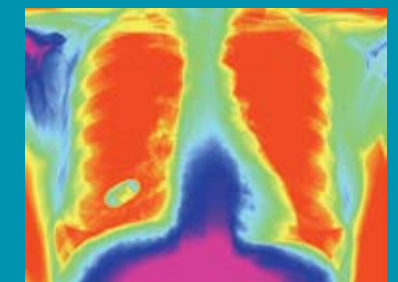
*Carmen Endress, M.D., radiologist*

## A NATIONAL HEALTH ISSUE

From plumbers to welders, electricians to carpenters, millions of American workers and their families may be facing serious lung diseases due to exposure to asbestos and asbestos containing materials such as vermiculite, taconite and others.

Even low levels of exposure to asbestos can cause asbestosis – a potentially fatal disease of the lungs – as well as lung cancer, colon cancer and mesothelioma, an extremely aggressive cancer of the covering of the lungs and intestines. Smokers are 50 times more likely to develop lung cancer if they are also exposed to asbestos.

Due to the widespread sources of asbestos and asbestos containing products, we are facing an asbestos disease epidemic. Exposures from 20 to 50 years ago are now killing up to 10,000 Americans each year.



THE NATIONAL CENTER  
*for* VERMICULITE *and*  
 ASBESTOS-RELATED CANCERS

*Compassionate, World-Class Care*



**Our nationally-recognized cancer teams** will work with your doctor to recommend the best treatment options and provide immediate access to the Center's latest cancer-fighting drugs and therapies. And, because we understand the stress, anxiety and sense of urgency that comes with a cancer diagnosis, we pay close attention to your emotional needs as well as your physical condition.

## WHAT ARE ASBESTOS AND VERMICULITE?

*“Exposures of the past are leading to an epidemic of vermiculite and asbestos-related cancers today. The National Center for Vermiculite and Asbestos-Related Cancers continues to work each day to improve the quality of life for its patients.”*

— JOHN C. RUCKDESCHEL, M.D.



*“Early detection is extremely important, as the effects of asbestos exposure often go unnoticed for many years. Because so many workers have been exposed to toxins in the industrial areas of southeast Michigan, our Center has a wealth of experience in diagnosing and treating asbestos-related diseases.”*

— MICHAEL R. HARBUT, M.D.

## ARE YOU AT RISK?

An estimated 1.3 million workers in construction and general industry face significant asbestos exposure on the job. Among the occupations where asbestos exposure can occur are:

- Pipe fitter
- Plumber
- Brake repair mechanic
- Insulation installer
- Dry wall finisher
- Carpenter
- Roofer
- Electrician
- Welder
- Miner
- Shipyard worker
- Construction worker
- Building demolition, repair or remodeling worker
- “Do-It-Yourself” repair worker
- Building inspector
- Bricklayer
- Furnace worker
- Worker at exfoliation facility where vermiculite ore from Libby, MT was processed

*At left, photos from left: John Graff, Ph.D., chief of Cancer Surveillance Research at Karmanos and assistant professor at Wayne State University; Alan Whitehouse, M.D., F.C.C.P., pulmonary consultant, Center for Asbestos Related Disease; and Rebecca Cline, Ph.D., senior scientist in Communication and Behavioral Oncology at Karmanos, and associate professor at Wayne State University.*

These workers can also expose their families to asbestos when they bring the fibers home on their skin, hair and clothes. You may be at risk for asbestos-related diseases if you:

- Lived with someone who regularly came in contact with vermiculite or asbestos
- Lived in a home with vermiculite attic insulation
- Lived near a vermiculite processing plant

Some of the early warning signs of asbestos-related diseases include a chronic cough that produces mucus, chest tightness and shortness of breath after performing even regular activities, such as climbing a flight of stairs.

### THE KEY TO A CURE

The Karmanos Cancer Center is committed to a future free of cancer, and much of our hope for a cure lies in clinical research. Thanks to the efforts of patient volunteers, our researchers have developed a new blood test that may help identify asbestos-related cancer. This test may help doctors discover the tumor earlier and begin treatment more quickly.

Patients at the National Center for Vermiculite and Asbestos-Related Cancers are invited to participate in various research studies that will help better define at-risk populations and develop tools for the early detection of asbestos-related diseases.

## MAKE AN APPOINTMENT

If you’ve been exposed to vermiculite or other asbestos contaminated materials – either at work or home – or if you’ve participated in a lawyer-sponsored asbestos screening program and have not received appropriate medical follow-up, make an appointment with the National Center for Vermiculite and Asbestos-Related Cancers by calling **1-800-KARMANOS**.

You’ll undergo a complete, sophisticated pulmonary function test and a CT scan. Your primary care physician will remain highly involved in your care and be kept thoroughly informed throughout the treatment process.

### CENTER FOR OCCUPATIONAL AND ENVIRONMENTAL MEDICINE

The Center for Occupational and Environmental Medicine was established in 1988 to provide medical, diagnostic and treatment services and to undertake research and prevention programs directed at diseases caused by occupational and environmental toxins. The Center is affiliated with Wayne State University.

### BARBARA ANN KARMANOS CANCER CENTER

The Barbara Ann Karmanos Cancer Center is committed to a future free of cancer. Designated by the National Cancer Institute as one of just 39 comprehensive cancer centers in the United States, Karmanos offers state-of-the-science cancer research and multidisciplinary patient care led by premier teams of cancer specialists.

BARBARA ANN  
**KARMANOS**  
CANCER CENTER

At the Detroit Medical Center



### DEFINITION OF ASBESTOS AND ASBESTOS CONTAINING MATERIALS, SUCH AS VERMICULITE

The group of minerals described as asbestos has been used historically for various industrial and construction purposes. Strong, flexible and heat resistant, they can still be found today in products such as automotive brake linings, pipe insulation and other fire proofing and building materials. Many household products, including children’s toys manufactured in China, contain asbestos.

Vermiculite is a mineral widely used for insulation as well as in potting soil to give it a loose, crumbly texture. Unfortunately, vermiculite is frequently contaminated with asbestos. Most vermiculite in the United States came from a mine near Libby, Montana, that also had a natural deposit of asbestos.

Millions of Americans are at risk of exposure because of the asbestos that remains in occupational settings; homes, offices and school buildings; and in a wide variety of products. One product alone – attic insulation contaminated with asbestos – is in an estimated 30 million U.S. homes.

